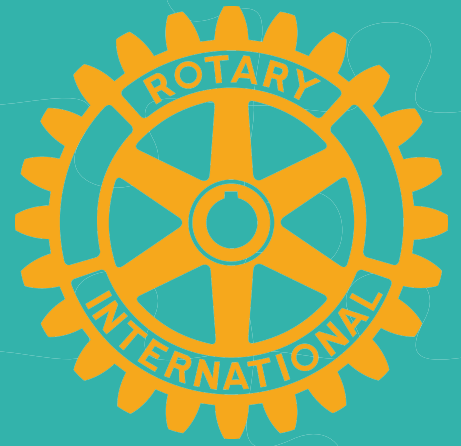


# Join The Rotary Club of Ventura East for a Jigsaw Puzzle Challenge!



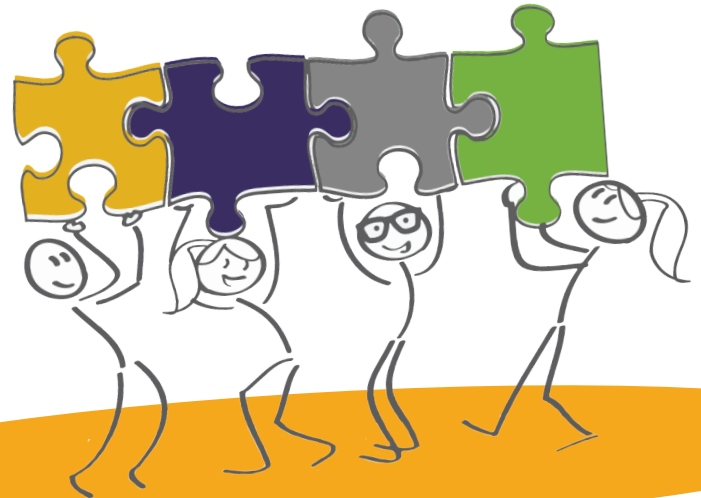
Cal Magro

Join us for our second annual Jigsaw Puzzle Competition benefiting The Rotary Club of Ventura East and Autism Society of Ventura County.

*The challenge will start promptly at 10:00 am - 2:00 pm, where the puzzles will be unveiled and the teams will get their focus on.*

*We will have prizes for the top 3 teams!*

*The event benefits Rotary Club of Ventura East an Autism Society of Ventura County. The fee for this event is \$60 per team (4 people).*



## When

**Aug. 22, 2021  
10:00 AM - 2:00 PM**

## Where



*Split & Fix*  
DETAIL SHOP  
(805) 746-9885



**Ventura Family YMCA  
3760 Telegraph Rd.  
Ventura, CA 93030  
United States of America**

**Your team must be pre-registered to play! Register your team today.**

<http://tiny.cc/puzzlesrock>